



EncoreHomes.ca

The Azalea

1,457 Sq. Ft.

3 Bedroom

2.5 Bath



The Azalea

1,457 Sq. Ft.

Expect to be Impressed!



TEL: 780-472-8362
FAX: 780-472-8343



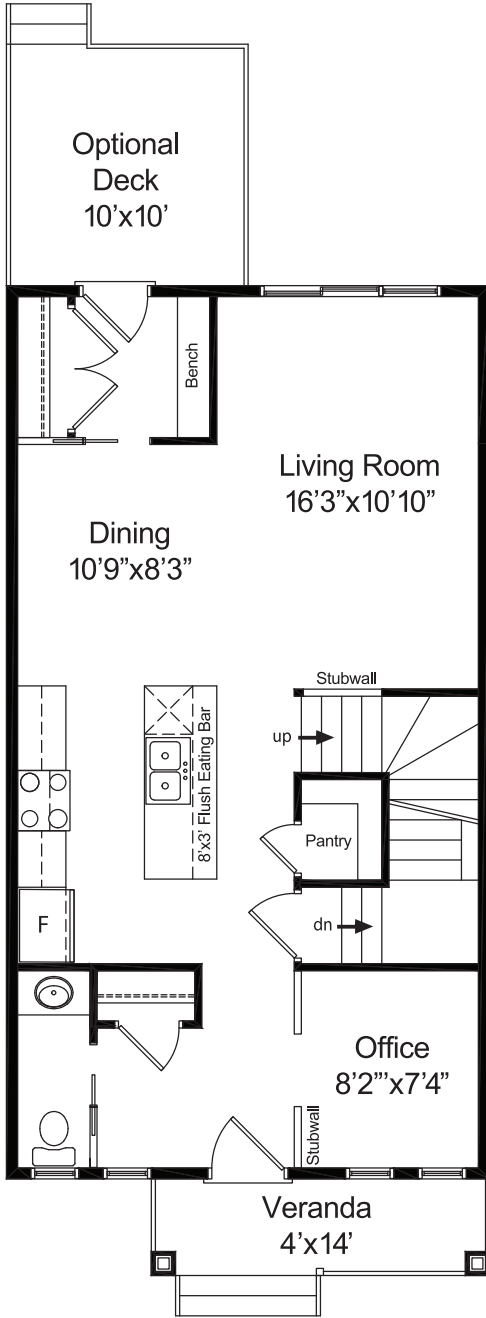
info@encorehomes.ca
EncoreHomes.ca



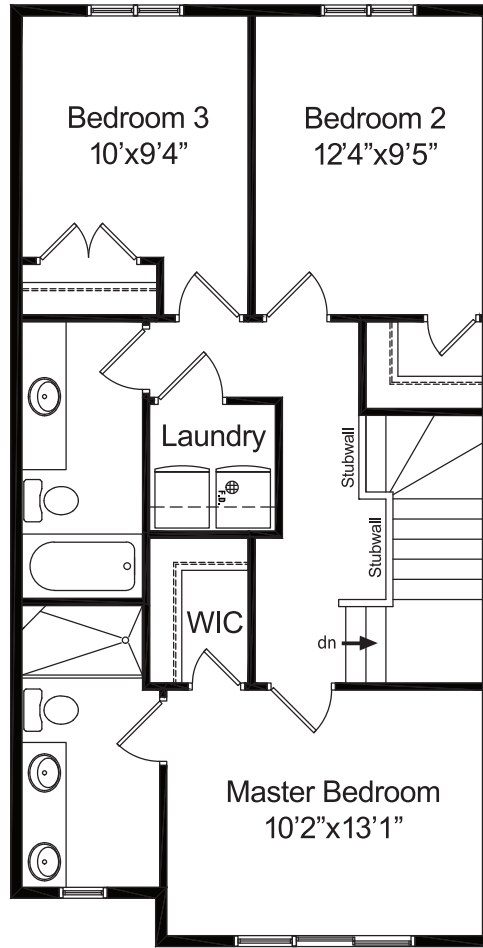
11344 - 119 Street
Edmonton, AB T5G 2X4

The Azalea

1,457 Sq. Ft.



Main Level
740 sq.ft.



Upper Level
717 sq.ft.

Alternate Elevation:



NOTE: Floor Plan documents are for sample purposes only. Elevations, dimensions, and layout are all subject to change without notice. Please contact us for details specific to actual properties.

Expect to be Impressed!